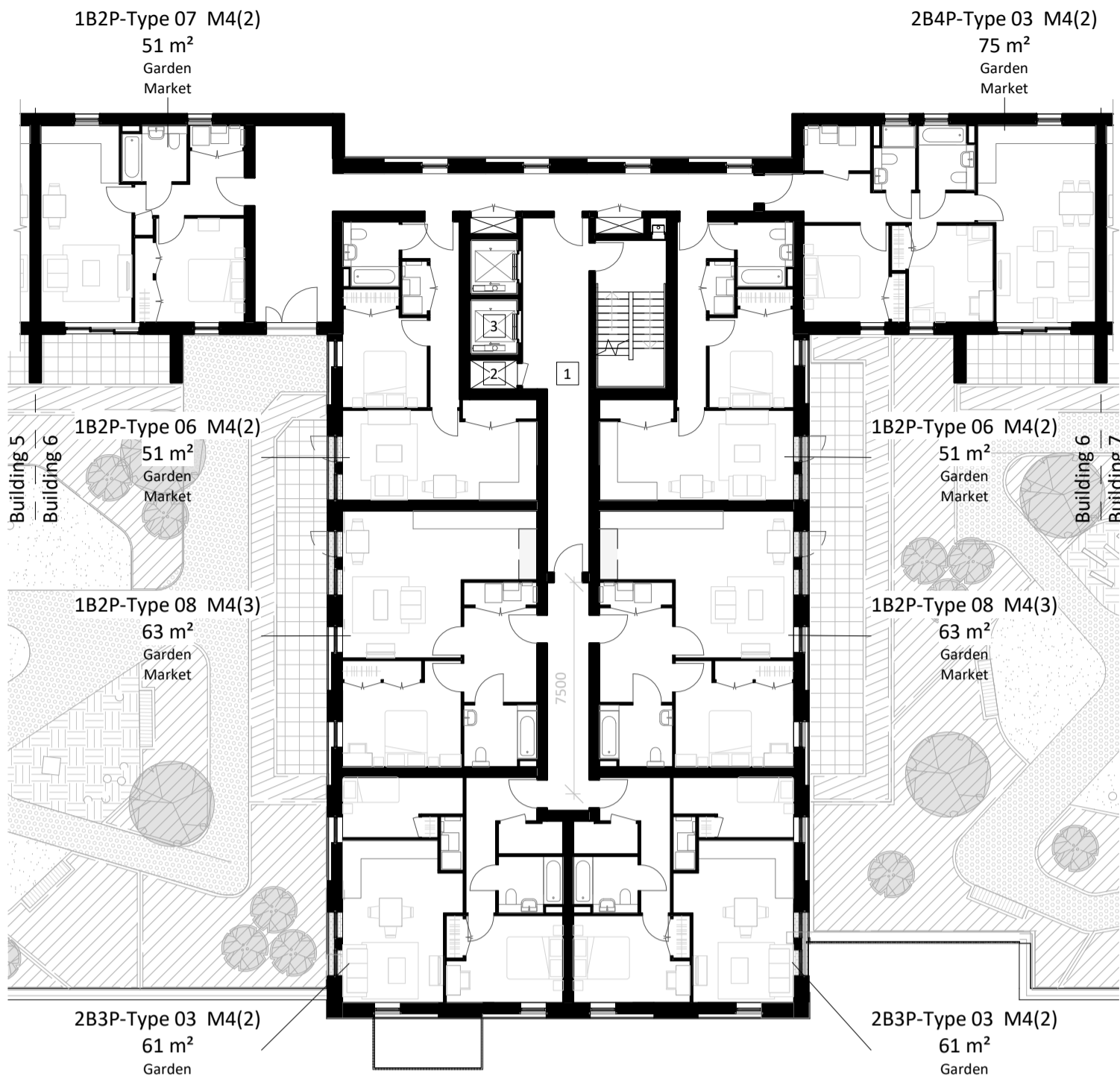
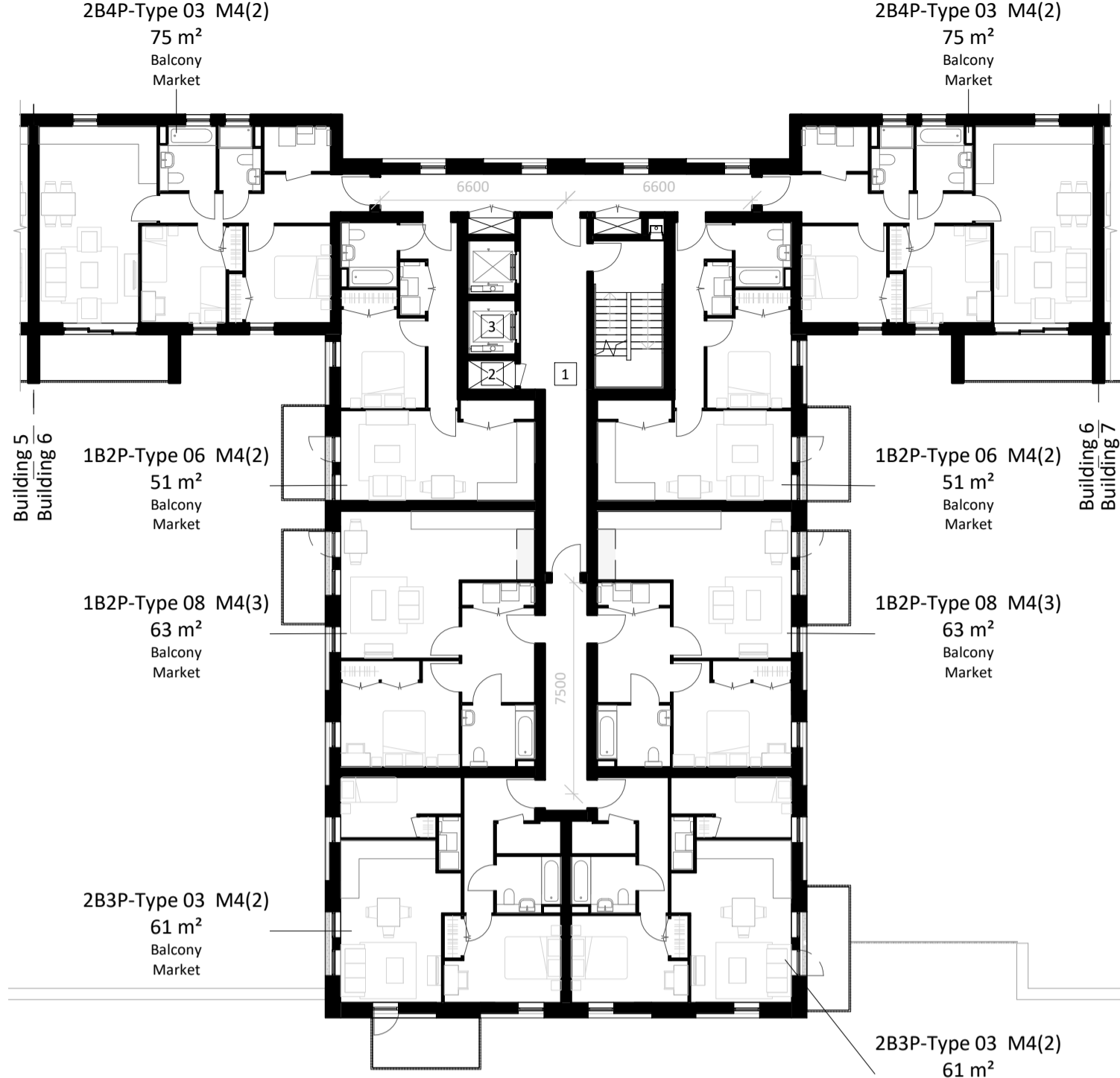


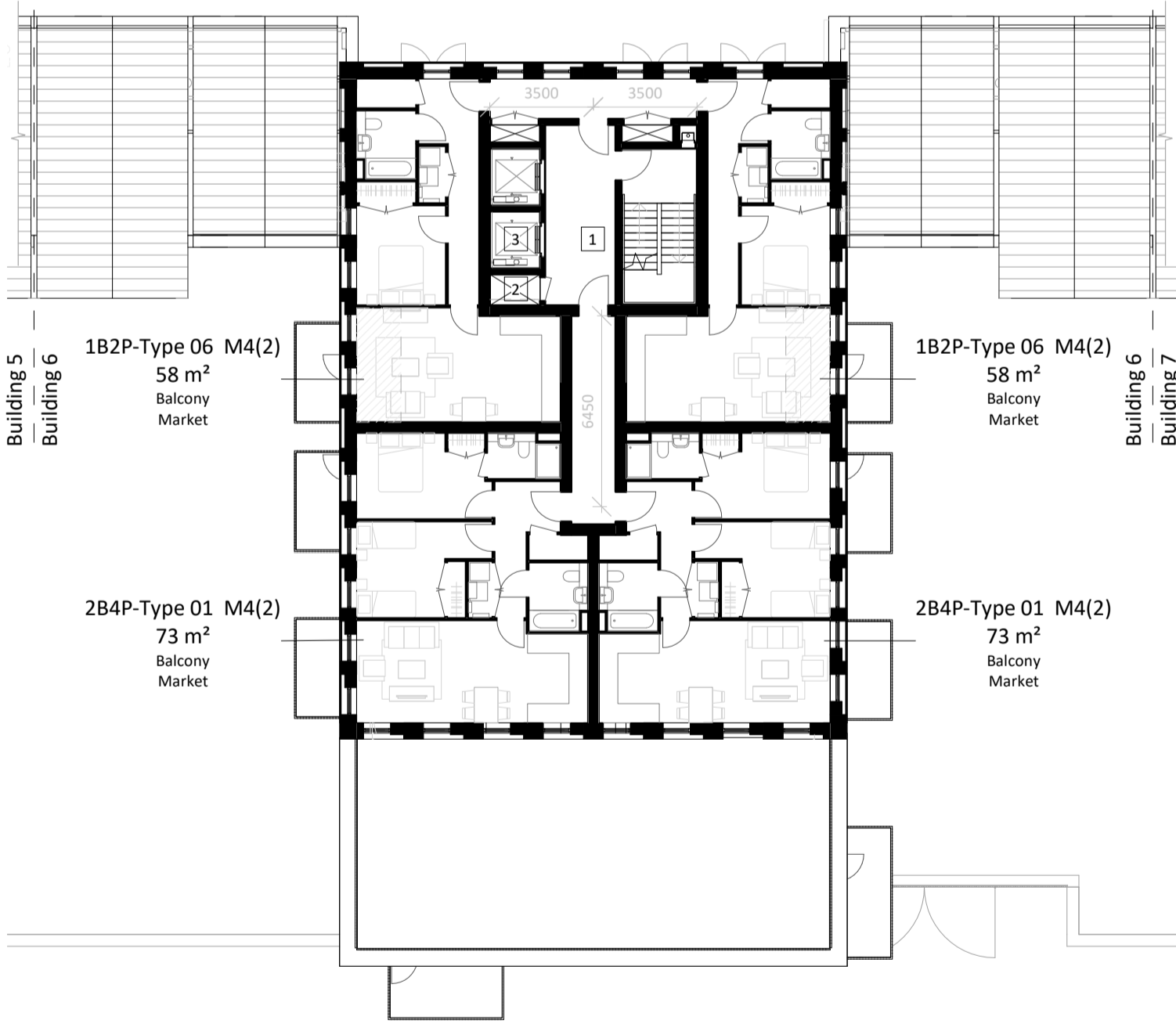
1 Building 6 - Ground Floor Plan
1 : 200



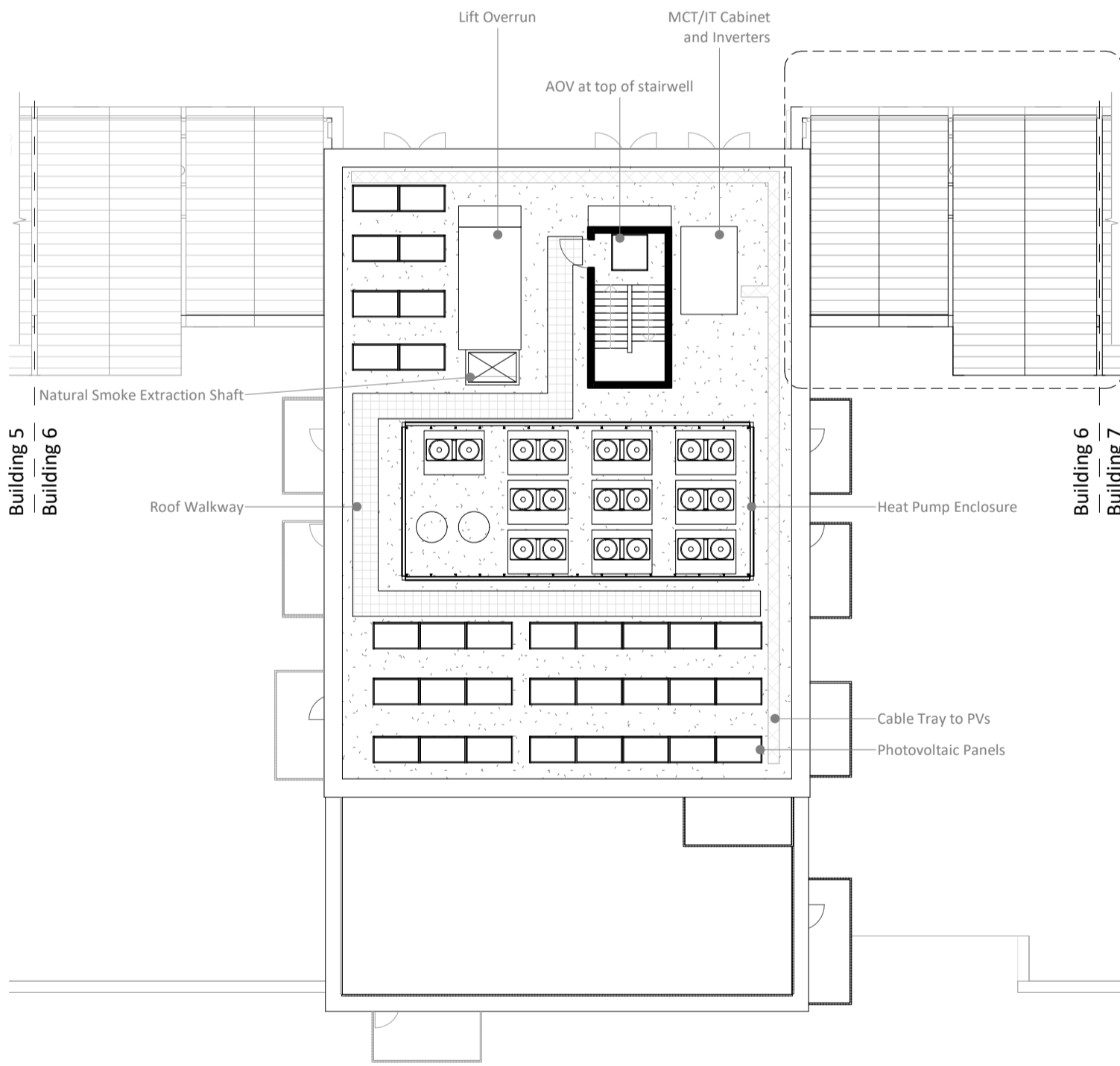
2 Building 6 - First Floor Plan
1 : 200



3 Building 6 - Second to Fourth Floor Plan
1 : 200

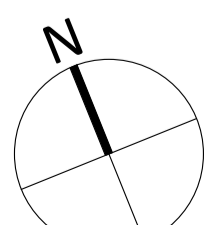


4 Building 6 - Fifth to Seventh Floor Plan
1 : 200



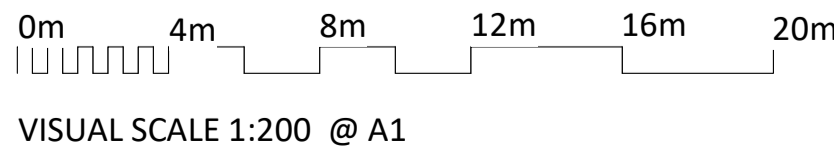
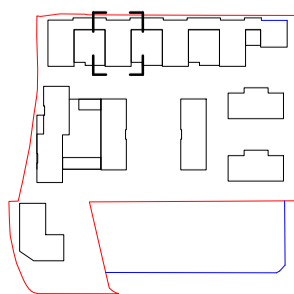
5 Building 6 - Roof Plan
1 : 200

NOTES
CONSULTANTS
- Refer to highways consultant's drawings for details
- Refer to landscape consultant's drawings for details
- Landscaping layout is indicative only
AREAS
- Refer to area schedule



Rev	Notes	Date	By	Auth
P1	DRAFT Planning Issue	19-08-30	CS	FvB
P2	Issue for Planning	19-09-05	CS	FvB
P3	Planning amendment	19-09-24	CS	FvB
P4	Update for GLA Application	20-04-07	OT	JBC
P5	Updated landscape plan	20-07-14	OT	IMG

KEY PLAN



VISUAL SCALE 1:200 @ A1

LEGEND: FIRE SECURITY

- 1 Sterile ventilated staircase lobby
- 2 AOV / Smoke shaft (min. 1.5m² section)
- 3 Firefighting lift
- 4 Mechanical smoke extraction duct (min. 0.6m² section)
- 5 Natural air inlet duct

ColladoCollinsArchitects

17-19 Foley Street
London W1W 6DW
T 020 7580 3490
F 020 7580 2917
info@colladocollins.com
www.colladocollins.com

Date: 09/02/19
Drawn By: CS
Checked by: JBC
Scale @ A1: As indicated
Scale @ A3: 1 : 400
CAD File No:

Inland Homes
Hillingdon
Building 6 - Floor Plans

PLANNING
19011

P1(06)-100

P5
Revision